



# Biddeford Forest Project

## A presentation for the Biddeford City Council

---

June 2, 2026

By Maine Coast Heritage Trust staff

- Hannah Whalen, Director of Development
- Chris Schorn, Southern Maine Project Manager
- Andrew Deci, Southern Maine Regional Stewardship Manager



Maine Coast  
Heritage Trust

# Maine Coast Heritage Trust

---

<b>Founded</b>	1970
<b>Offices</b>	Topsham (business office) Rockport Whiting Mount Desert Island
<b>Websites</b>	<a href="http://mcht.org">mcht.org</a> <a href="http://mltn.org">mltn.org</a> <a href="http://aldermere.org">aldermere.org</a>
<b>Employees</b>	80+
<b>Leadership</b>	Kate Stookey, President & CEO MacKenzie Davis (Micah), Board Chair
<b>Departments</b>	Communications & Philanthropy Community & Government Relations Executive Finance & Administration Land Protection Stewardship
<b>Founders</b>	Thomas D. Cabot (1897-1995) Margaret M. Rockefeller (1915-1996)



-  MCHT conserved places
-  MCHT partner projects
-  Maine conserved lands

# Over 50 years of impact



**200,000** acres conserved with partners

**335** islands protected

**165** places open to the public, **105** miles of trail

Founder and coordinator of the **Maine Land Trust Network**

**\$200 million** raised since 2014 towards conservation in Maine

Pioneered use of conservation easements in the **1970s**

Co-founder of the national **Land Trust Alliance**

Co-creator of **Land for Maine's Future**



# Our mission

---

To advance the conservation of lands and waters in Maine to ensure ecological wellbeing and foster thriving communities.





# Our vision

---

To create a world in which the lands and waters that sustain life are healthy, resilient, and an enduring source of connection for all.



# The impact of your engagement since 1970

106



Miles of MCHT  
Trail to Explore

341



Coastal Islands  
Protected with Partners

168



MCHT Preserves  
Open to the Public

Over  
200k



Acres Conserved  
with Partners

## Additional key milestones since 1970:

- Co-founded the national Land Trust Alliance
- Helped launch and sustain Land for Maine's Future
- Initiated the Maine Land Trust Network, supporting Maine's 80+ land trusts
- Pioneered use of conservation easements in 1970s and helped establish legislative rubric that makes them possible

# Impacts in 2025

Over  
**35**



Miles of Freshwater and  
Saltwater Shoreline Protected

**16**



New Places Permanently  
Open to the Public

**26**



Places Permanently  
Protected

**11**



Coastal River and Tidal  
Marsh Projects Completed

**2**



Islands Protected

**16**



Partnership Projects  
Completed

Nearly

**10,000**

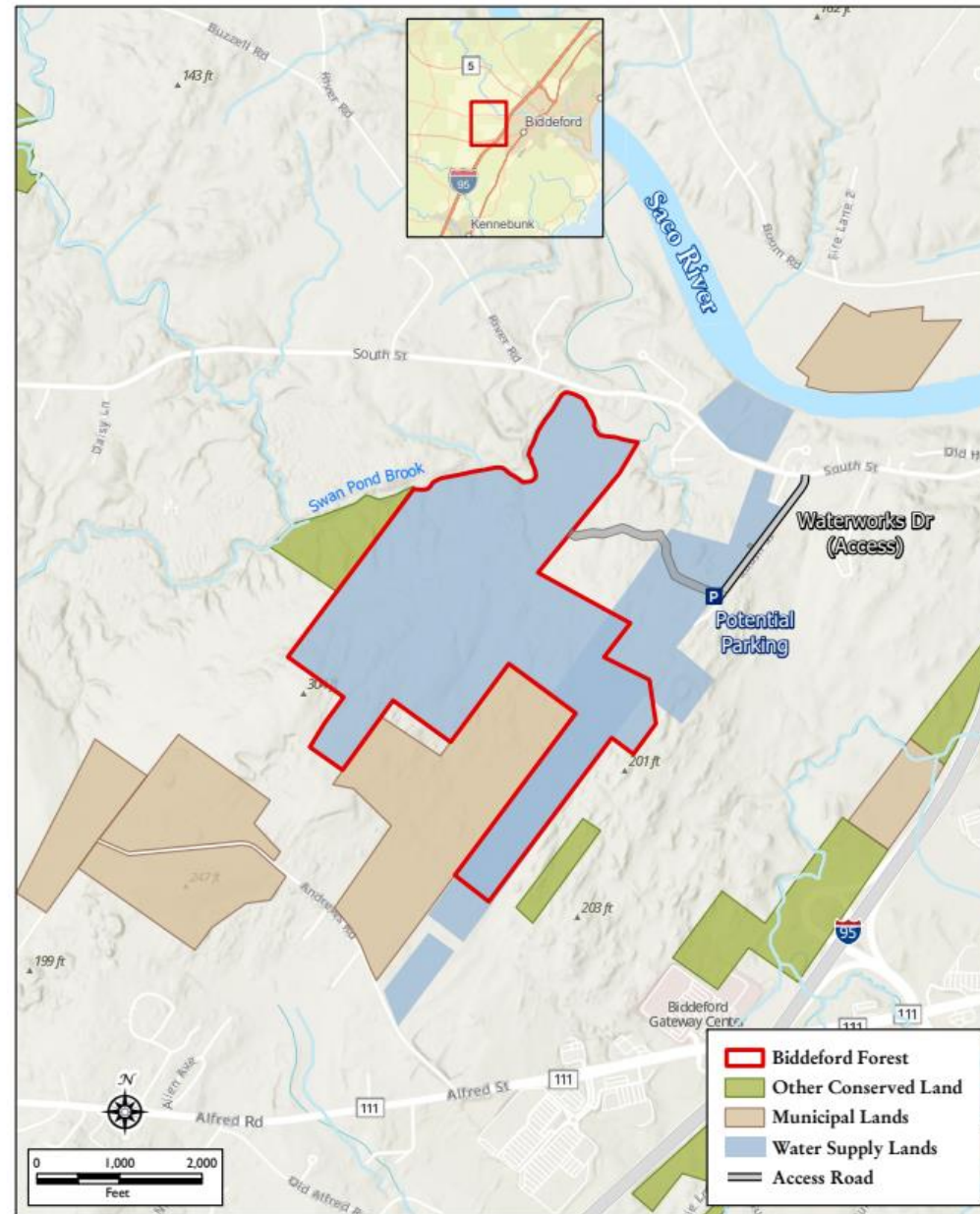


Acres Conserved



# Biddeford Forest

- In this map, the project is outlined in red.
- It stretches from Water Works Drive to Swan Pond Brook.



# Biddeford Forest

- **Maine Coast Heritage Trust (MCHT) and the Maine Water Company are working together to protect 257 acres of forest and open space in Biddeford via a conservation easement.**
- **Protects an ecologically significant area, provides a natural area for people to explore, and supports high-quality drinking water for Maine communities.**
- **Part of a 2,679-acre forest block; expansive undeveloped areas like this are increasingly rare in Southern Maine and vitally important for wildlife.**

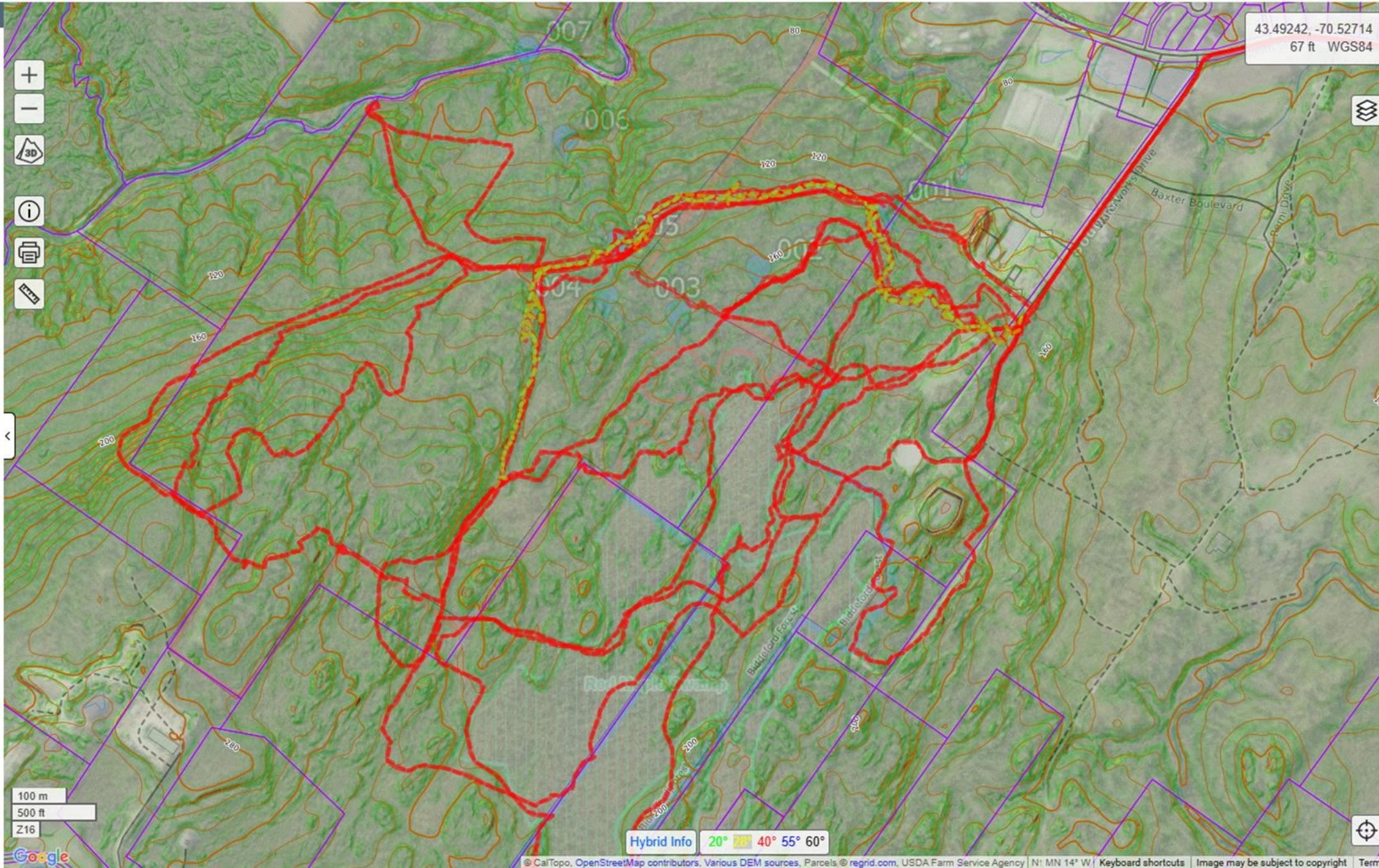








43.49242, -70.52714  
67 ft WGS84



**Map Layer**  
FROM MCL

**Terrain**

- Contours
- 10 Foot Cont
- Slope Angle
- Gradient Slo

**Route Discovery**

- MapBuilder C
- Recreation
- Shared Maps

**Ownership**

- Parcel Data
- Public Lands

**Conditions**

- Weather Sta
- Wind Plot
- Avy Forecast
- Sun Exposure

**Your Data**

- Your Maps
- Your Tracks

**Your Overlays**

- Maine\_Boat
- Maine\_E911



## Opportunity!

- Good soils and topography for trails
  - Skidder trail network and landing areas
  - Interesting destinations
    - Swan Pond Brook
- 
- Unique Natural Communities and Cover Types
  - Topography and ledge crag & outcrop





**Location:** Biddeford

**Project size:** 257 acres

**Project goal:** \$475,000

**Fundraising deadline:** December 31, 2026

Fundraising includes support into MCHT's Pooled Stewardship Fund for ongoing stewardship of MCHT's preserves, including the Biddeford Forest Project.

**For more information:**

MCHT Communications & Philanthropy Department  
[engagement@mcht.org](mailto:engagement@mcht.org) | (207) 729-7366

An aerial photograph of a dense forest with vibrant green foliage. The trees are packed closely together, creating a rich, textured canopy. The lighting is bright, highlighting the various shades of green, from deep forest greens to bright, almost yellow-green highlights on some tree tops. The overall scene is lush and natural.

**Ways to Get Involved**

**Support this project with a gift of your time**

**Stay tuned for updates on public opening**

**Make a gift to MCHT for the Biddeford Forest  
Project**



Maine Coast  
Heritage Trust

---

### Topsham (Business)

1 Bowdoin Mill Island, Suite 201  
Topsham, ME 04086

(207) 729-7366

### Mount Desert Island

1034 Main St.  
Mount Desert, ME 04660

**MDI Mailing:**  
P.O. Box 669  
Mount Desert ME 04660

(207) 244-5100

### Downeast

160 U.S. Route 1  
Whiting, ME 04691

(207) 259-5043

### Aldermere Farm

20 Russell Avenue  
Rockport, ME 04856

(207) 236-2739

---

Find us on social media



[mcht.org](http://mcht.org)  
[aldermere.org](http://aldermere.org)  
[mltn.org](http://mltn.org)



Maine Coast  
Heritage Trust

# Thank you for joining us!

## For more information contact us:

Andrew Deci, Southern Maine Regional Stewardship Manager, [adeci@mcht.org](mailto:adeci@mcht.org)

Chris Schorn, Southern Maine Project Manager, [cschorn@mcht.org](mailto:cschorn@mcht.org)

Hannah Whalen, Director of Development, [hwhalen@mcht.org](mailto:hwhalen@mcht.org)